

# IS YOUR NETWORK

# HOLIDAY-READY?

The holidays bring us a lot of exciting things: delicious food, fun gifts, and (perhaps) guests who may ask for your Wi-Fi password.

If you're welcoming family and friends this holiday season, make sure your network is secure before they arrive with these simple steps:



## REMEMBER:

Every router is different. If you're having trouble with any of these steps, visit the manufacturer's website.

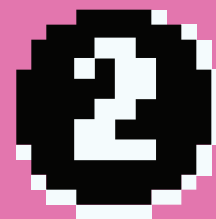


## OPEN YOUR ROUTER CONSOLE

When connected to Wi-Fi, enter your router's IP address into the address bar on your internet browser.

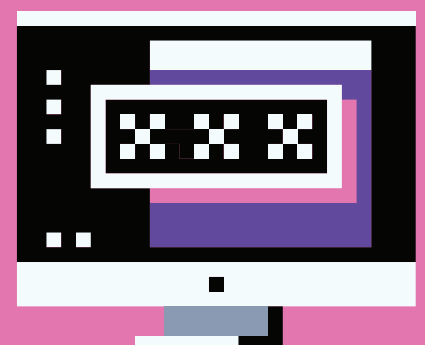
### DON'T KNOW YOUR IP?

Router IP addresses aren't unique. A quick web search of your router's brand should give you the info you need.



## LOG IN

Enter your username and password. If you've never changed these, there's a good chance they're printed on the back of your router or found on the manufacturer's website.





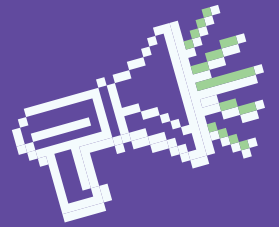
## FIND THE SECURITY SETTINGS



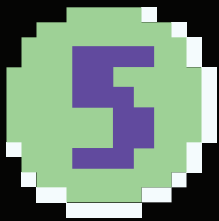
Your router might call this section something like Wireless Security.



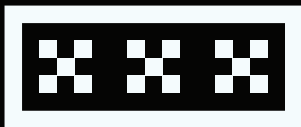
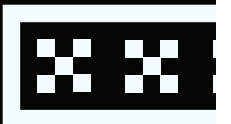
## RENAME YOUR ROUTER



If you haven't already, give your network a new name or SSID. This name can be as simple or silly as you want, but don't include any personal information.



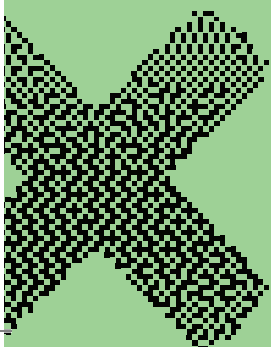
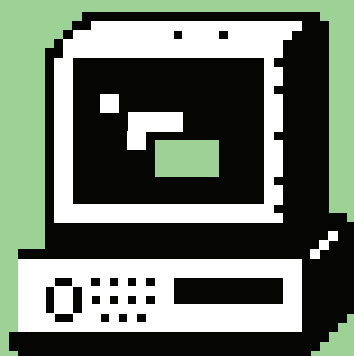
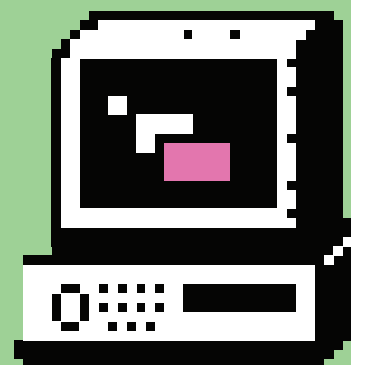
# USE A PASSPHRASE



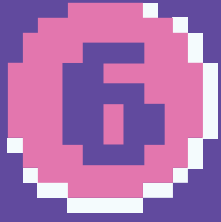
Use a passphrase for your router's password. This is especially important if you've never changed it before!

### A PASSPHRASE:

- ➔ Is a combination of random words
- ➔ Is at least 4 words and 15 characters long
- ➔ Does not need any special characters or capitals
- ➔ Does not use common expressions like song titles or lyrics



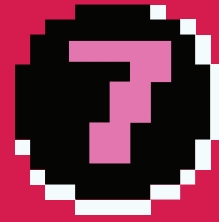
If your router puts restrictions on your password, try to use at least **8-12 characters**, uppercase and lowercase letters, numbers and symbols, with no dictionary words or personal info.



## CHANGE YOUR ENCRYPTION

Under the Network Authentication setting, choose **WPA2-PSK** or **WPA2-Personal**.

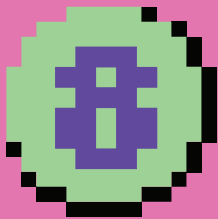
If you don't see a WPA2-PSK or WPA2-Personal option, you may need to upgrade your router to stay as secure as possible.



## CREATE A GUEST NETWORK

Keep your personal network protected. Create a separate guest network to allow your smart devices and visitors access to the internet, but not your sensitive personal information!

Many routers have a checkbox in the settings to turn on a guest network. Make sure to give your guest network a unique name and password.



## SAVE YOUR SETTINGS

Click **Save** or **Apply** to save the changes. You may need to reboot your router.



## GET CONNECTED (AGAIN)

Connect your personal devices to your personal network and your smart devices (and your possible holiday visitors!) to your guest network.

**SECURING YOUR WI-FI NETWORKS IS AN IMPORTANT STEP TO HAVING A CYBER SAFE HOLIDAY SEASON!**

**GET MORE TIPS AT:**

[GETCYBERSAFE.CA /cybersafeholidays](https://getcybersafe.ca/cybersafeholidays)



Communications  
Security Establishment

Centre de la sécurité  
des télécommunications

Canada 